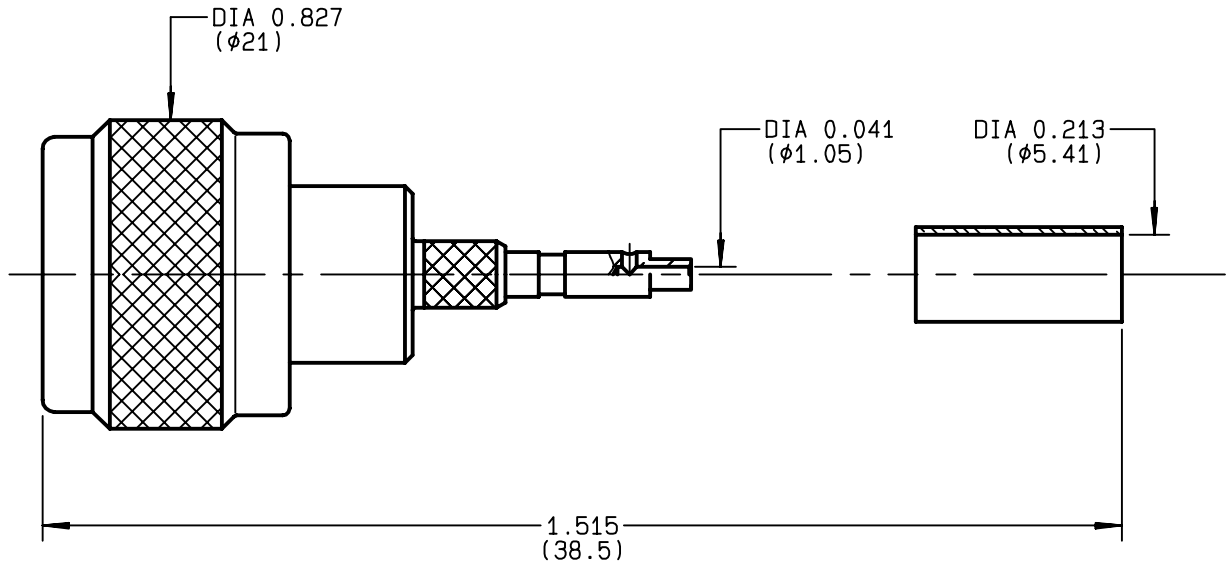


**STRAIGHT PLUG CRIMP TYPE
CABLE 5/50 S**

R161.082.400
SERIES N



NOMINAL IMPEDANCE	50 Ω	CABLES : BSSM 742
FREQUENCY RANGE	0-11 GHz	KX 15
TEMPERATURE RATING	-55/+155 °C	RG 141
V.S.W.R	1.3 + x F(GHz)Maxi	RG 58
RF INSERTION LOSS	0.048 √F(GHz) dB Maxi	
VOLTAGE RATING	850 Veff Maxi	
DIELECTRIC WITHSTANDING VOLTAGE	1500 Veff Mini	
INSULATION RESISTANCE	5000 MΩMini	OTHERS CHARACTERISTICS
HERMETIC SEAL	NA Atm.cm ³ /s	CABLE RETENTION
LEAKAGE (pressurized only)	NA	200 N Mini
MECHANICAL DURABILITY	500 Cycles	CENTER CONTACT RETENTION
WEIGHT	gr	Axial force - mating end
SPECIFICATION		27 N Mini
		Axial force - opposite end
		27 N Mini
		Torque
		NA cm.N Mini
		RECOMMENDED TORQUES
		Mating
		130 cm.N
		Panel nut
		NA cm.N
		Clamp nut
		NA cm.N

CONNECTOR PARTS	MATERIALS	FINISH	(all values are given) in micrometers
BODY	BRASS	BBR 2	
OUTER CONTACT	BRASS	BBR 2	
CENTER CONTACT	BRASS	GOLD 0.5 OVER NICKEL 2	
INSULATOR	PTFE	-	
GASKET	SILICONE RUBBER	-	
OTHERS PIECES	BRASS	BBR 2	

ISSUE	CREATION DATE	FILE PART-NUMBER
9835C00	11/06/1992	91-0400-268



RADIALL®

Connect to the future

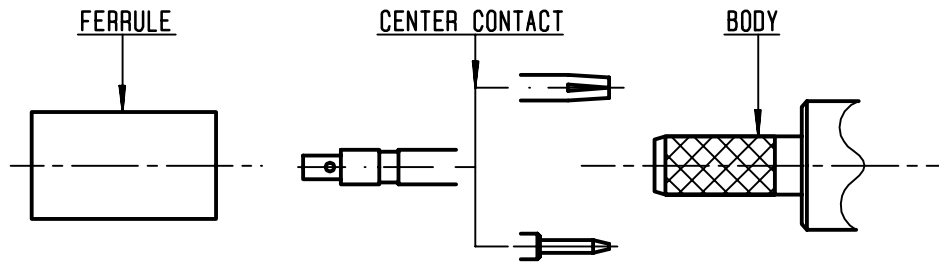
D. PIONCHON

The information given here is subject to change without notice.
Design changes may be in order to improve the product .



R161.082.400

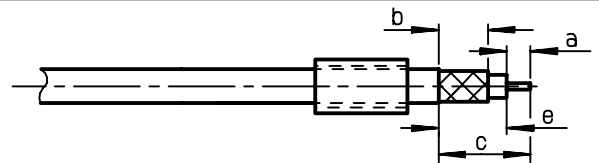
ISSUE **9835C00** SERIES **N**



①

Slide onto the cable the ferrule .
Strip the cable.

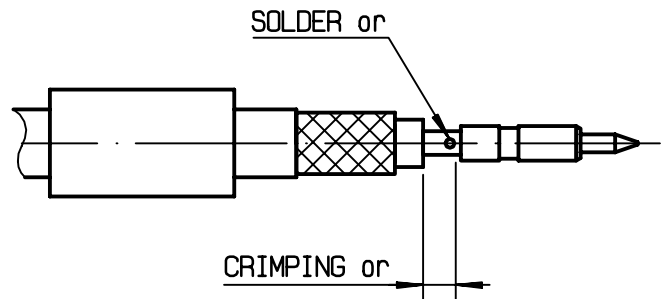
-
-
-



Stripping	a	b	c	d	e
inch	0.177	0.315	0.551	0	0.374
mm	4.5	8	14		9.5

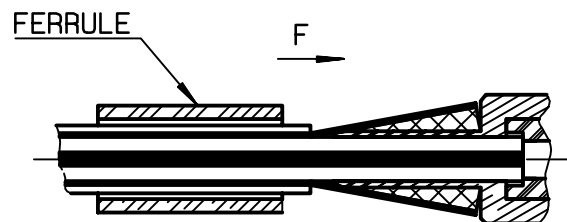
②

Slide on center contact until it bottoms against cable dielectrique .
Solder or crimp center contact .
Crimping tool :R 282 223 000 (hex: .068)
or R282 293 000 (M22520/5-01) +
dies R282 235 011 (M22520/5-11)
(We advice to solder center contact
to improve electrical performances)



③

Fan the braid.
Slide cable into the body until bottoms against insulator .
Slide ferrule over the braid .
(In direction F)



④

Crimp the ferrule with crimping tool
R 282 223 000 (Hex. : .213) or
crimping tool M22520/5-01 (R 282 293 000)
+ dies M22520/5-11 (R 282 235 011)
Cut the excess of braid .

